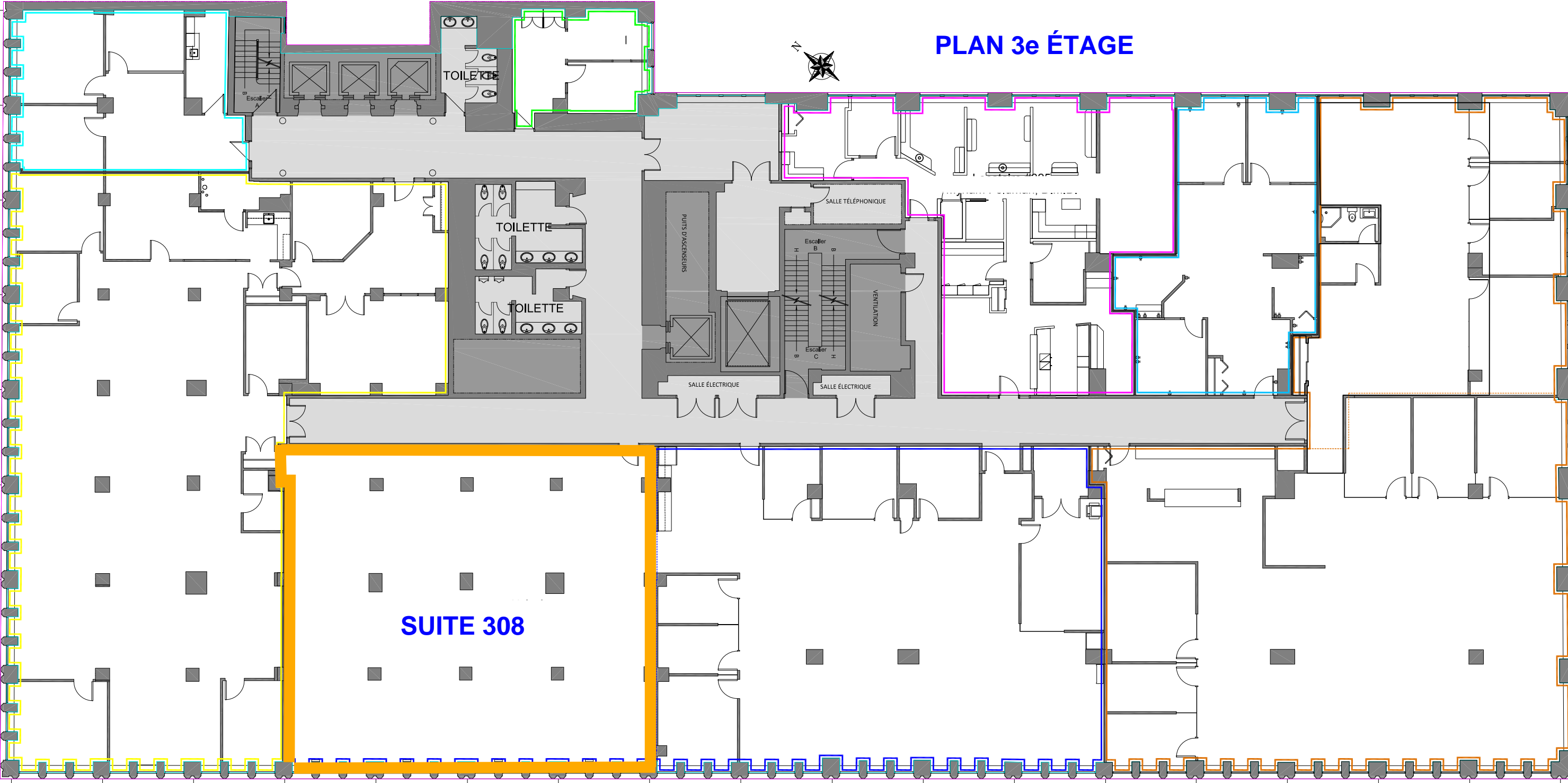


PLAN 3e ÉTAGE



SUITE 308

SUITE 308

This is a floor plan for Suite 308. The room is rectangular and contains a 3x3 grid of square fixtures, likely representing ceiling lights or vents. The walls are shown with various details, including door frames and wall-mounted fixtures. A blue line outlines the perimeter of the room, and a yellow line follows the left wall. The text 'SUITE 308' is centered in the room in a bold blue font. The bottom edge of the plan shows a series of small, repeating rectangular shapes, possibly representing a baseboard or a specific wall treatment.